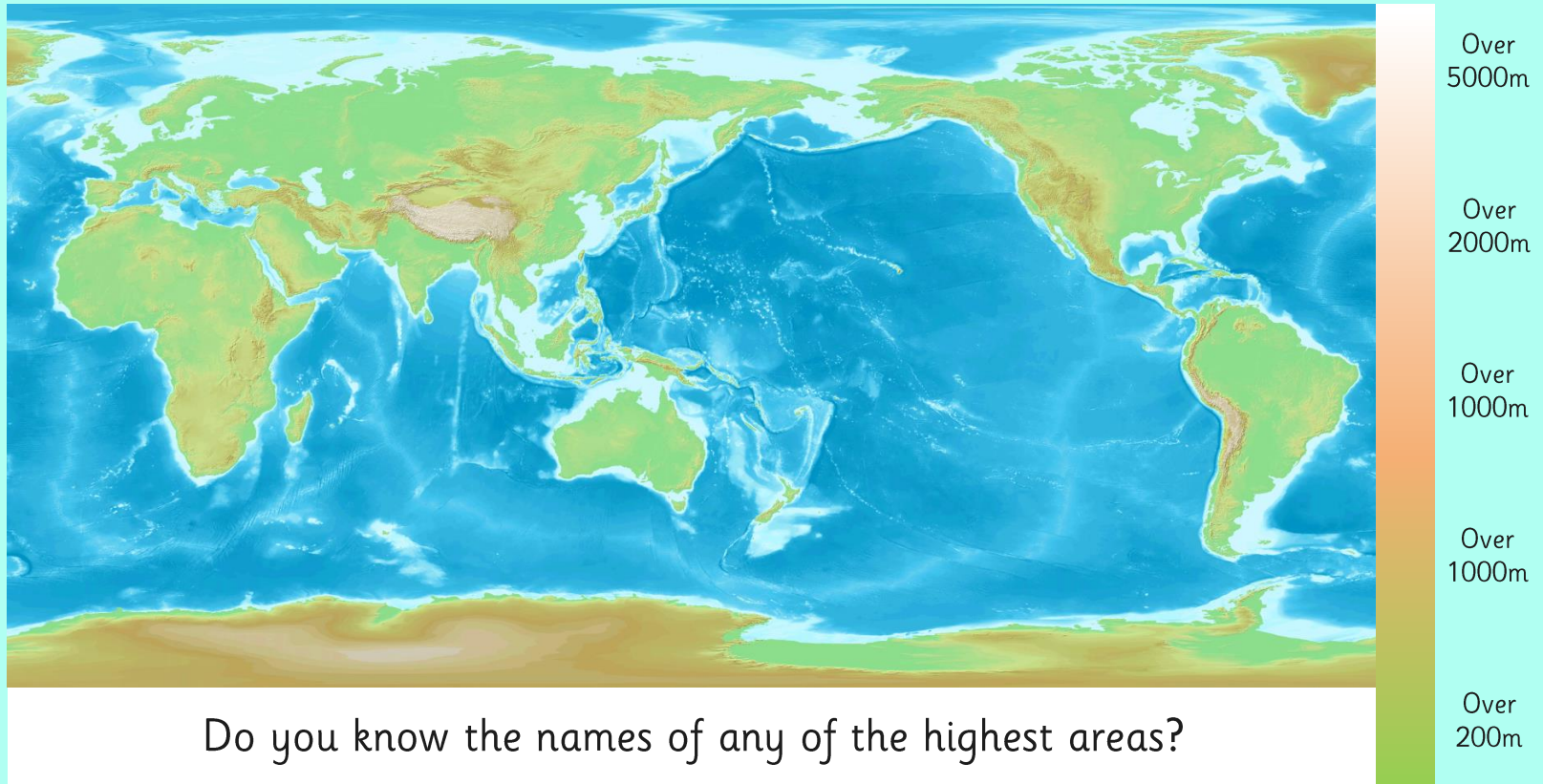


Mountain Ranges



Using the Legend



What Is a Mountain?

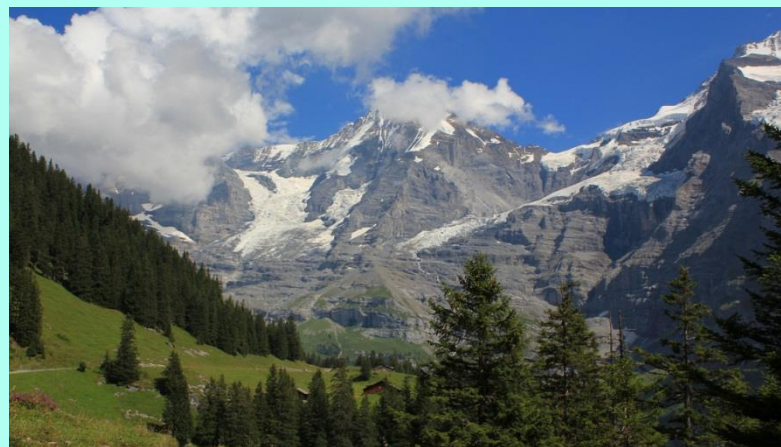
How would you explain to someone what a mountain is?

When does a hill become a mountain?

A mountain is usually defined as a part of the landscape with steep slopes that rise over 300m.

Some geographers define a mountain as a summit of at least 600m high.

Some mountains are found in groups called ranges, others are isolated summits.



Locating Mountains

Where do you think the highest mountain in the world is located on this map?

It's here!
Do you know its name?



Photo courtesy of Mot the barber and Cessna 206 @ flickr.com) - granted under creative commons licence — attribution

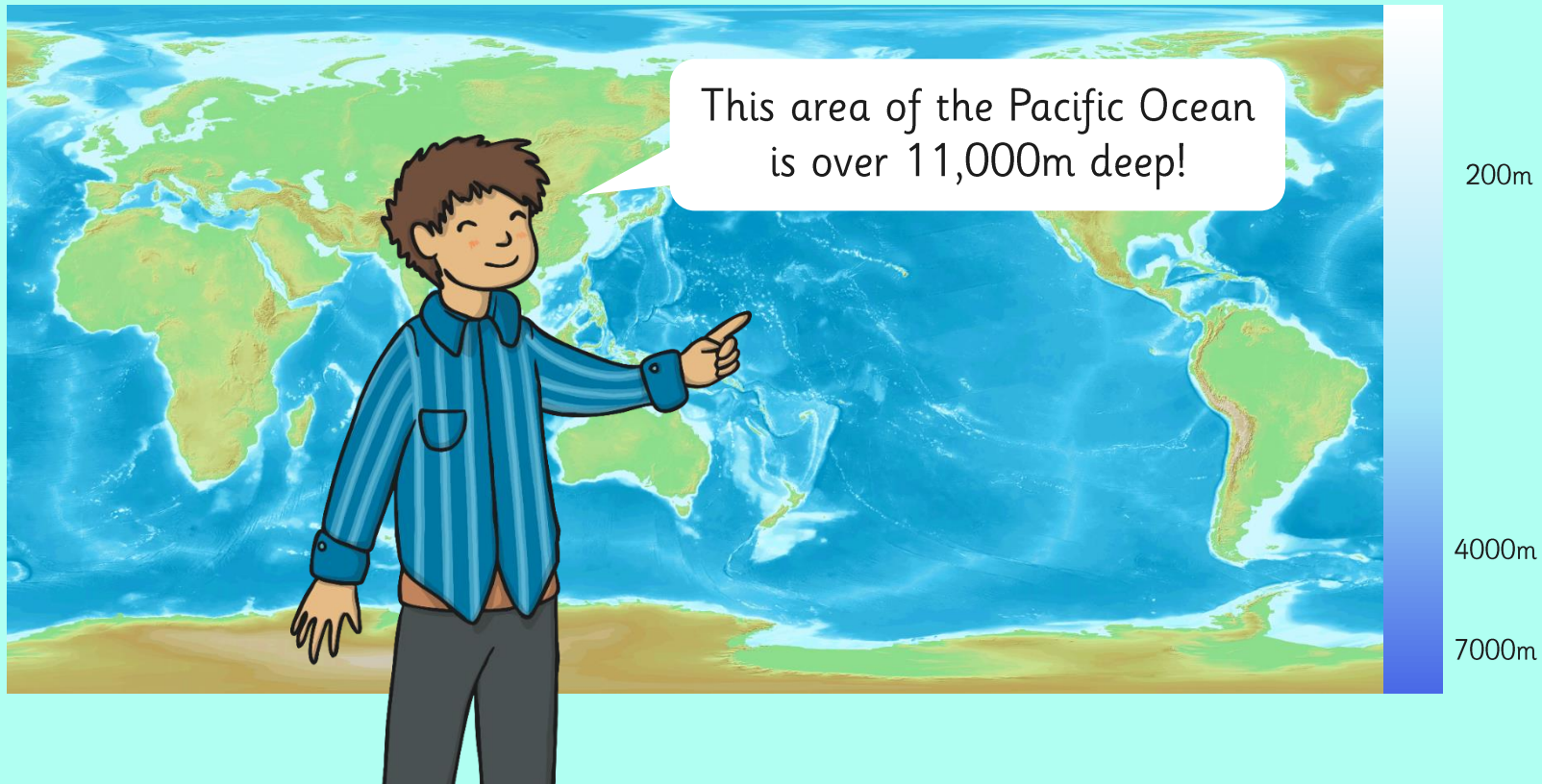
Your task

Task 1: Look at the map below. Isn't it beautiful? Use a map or atlas (or google Earth) to label the following mountain ranges accurately on your map: Pyrenees, Alps, Carpathians, Apennines, Urals, and Balkan Mountains.

Task 2: research where the highest peaks are in located in Europe, label them on your map and include their peak height in feet.



Under the Sea



Mountain Facts

Can you remember how to find a specific location in your atlas?

Look in the index.

Use the page number and coordinates to find the mountain.

Fill in the fact card with more details about the mountain.

