

Diving into Mastery – Diving

Adult Guidance with Question Prompts

When reading the time, pay particular attention to the time at quarter to the hour as this is often where children misunderstand. For quarter to 2, remind them that it is 15 minutes until it is 2 o'clock. Some children may say quarter to 1, as the hour hand is still between 1 and 2.

Where does the minute hand point when it is quarter past?

Where does the minute hand point when it is quarter to?

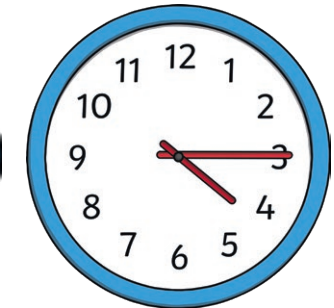
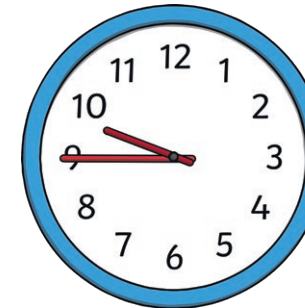
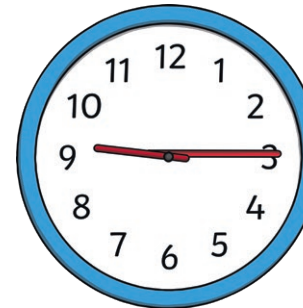
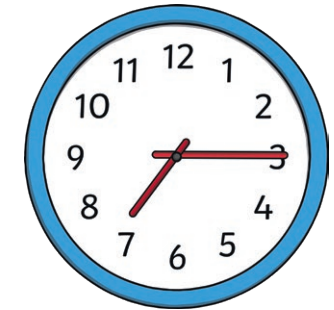
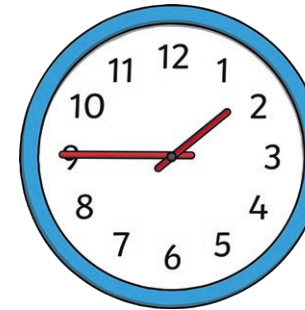
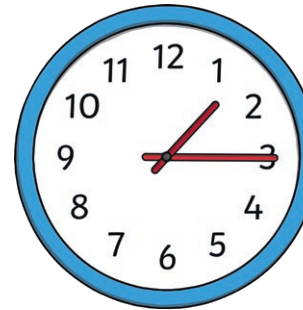
Which clocks show quarter to and which show quarter past?

Can you tell quickly by looking?

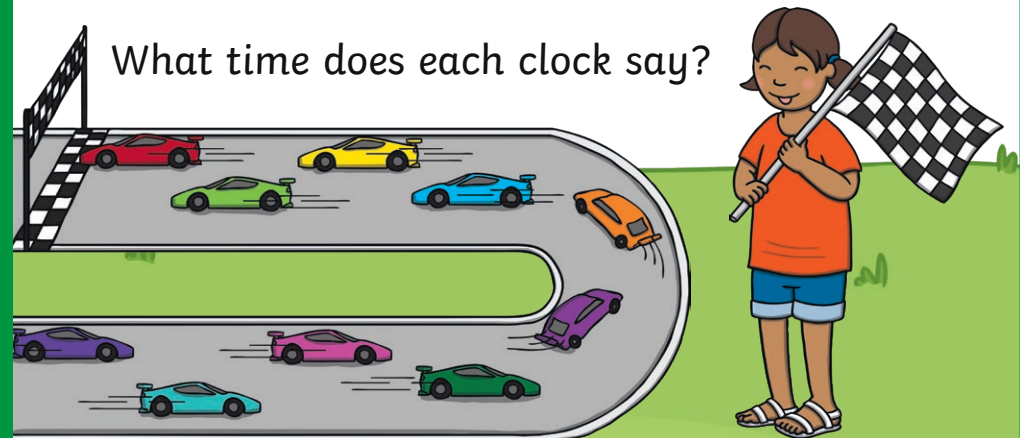
Race against the Clock



The races always start at quarter past the hour. Which clocks show the times when the races could have started? Tick them. Explain how you know.



What time does each clock say?



Diving into Mastery – Deeper

Adult Guidance with Question Prompts

What does 'quarter to' mean?

Emphasise that 'quarter to' means 15 minutes until the next o'clock time. This clock shows it is 15 minutes after the hour (not before).

Who is right? Can you explain why?

Can you explain to Ahmed what the clock would look like if it were quarter to 1?

What time will the next race start at?

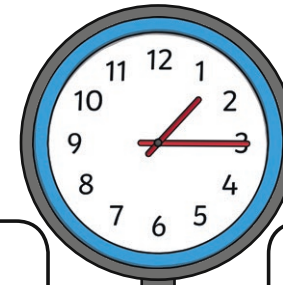
How long will it be until the next race?

Can Ahmed and Anita watch the race at quarter to 1? How do you know?

Race against the Clock



The races always start at quarter past the hour. Ahmed and Anita want to watch the next race. Ahmed thinks the race is about to start.



The time is quarter to 1. The race is starting!

No, it is quarter past 1. The race starts now!

Who is right?
Convince me.

Diving into Mastery – Deepest Adult Guidance with Question Prompts

Children may benefit from having clocks to help with this activity.

Pay particular attention to the time at quarter to the hour, as this is often where children misunderstand. For quarter to 9, remind them that it is 15 minutes until it is 9 o'clock. Some children may say quarter to 8, as the hour hand is still between 8 and 9.

Can you see that the hour hand is a little after the hour at quarter past?

Where is the minute hand at quarter past?

What time does the clock say?

Can you see that the hour hand is a little before the next hour at quarter to?

Where is the minute hand at quarter to?

What time does the clock say?

Can you explain why it is not quarter to 8?

Race against the Clock



Look at the clocks that show the start and finish time of a race. Complete the sentences.



hour hand $\xrightarrow{\text{just after}}$

minute hand $\xrightarrow{\text{pointing to}}$

The time is _____



hour hand $\xrightarrow{\text{just before}}$

minute hand $\xrightarrow{\text{pointing to}}$

The time is _____

How long did the race last?
How do you know?