



# We Remember Mary During May





# Month of May

During the month of May,  
we can create a May altar in  
honour of Mary.

Have you ever seen a May  
altar before?





# Where Will Our May Altar Go?

You can create a May altar almost anywhere!  
It could be in your Sacred Space, on a windowsill or on top of a cupboard.



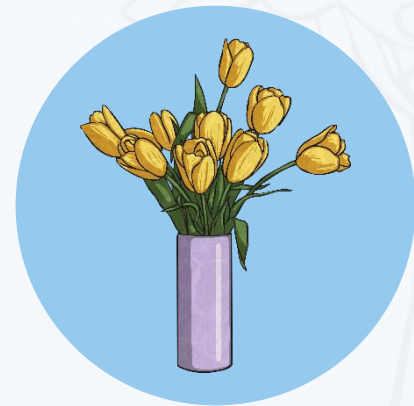
# What Can We Put on Our May Altar?

The first thing that should go on all May altars is a statue or picture of Our Lady.

A blue or white cloth is usually laid on the altar as these are the colours we think of when we think of Mary.

As May is the first month of summer, fresh flowers and plants are usually used to decorate the altar.

Can you name any flowers or plants we can use?





# Flowers Commonly Associated with Mary



These flowers are commonly associated with Mary:

Roses

Ivy

Carnations

Baby's Breath

Violets

Marigolds

Irises

# What Else Can Go on Our Altar?



Rosary beads. You could say a decade of the rosary every day during the month of May.

Prayers to Mary. Why not write your own special prayer to Mary and display it on your altar?





# Look At Our Lovely May Altar!

Now we have our lovely May Altar set up in our classroom, we should remember that Mary loves us all and she wants us to live as Jesus would like us to.







twinkl

